

LUX PERPETUA

FOR SYMPHONIC WINDS AND PERCUSSION

E♭ Baritone Saxophone

FRANK TICHELI

With Quiet Reverence ♩ = c. 72

6 9 6

pp mf

17 5 25 7 32 3

p p mf

35 mf p mf

41 3 3 42 2 3 3 3

f mf mf

49 3 rit. molto rit. lunga

f mf

58 Solemn ♩ = c. 48 4 66 ♩ = c. 56

p mf

68 mf

74 76 Majestic ♩ = c. 60

f mf

81 2 rit. A Tempo 2

f ff mf p

E♭ Baritone Saxophone

90 ♩ = c. 120 accel. Bsn. cue
mf

95 Play
mf

99 f

105 2 107 ♩ = c. 168 (♩ = c. 84)
mf

114 117 ♩ = c. 84
f

119 2 crisp and distinct 123
f

124 f sf sf

127 4 3 135 f sf

E♭ Baritone Saxophone

137



143



149



155



158



164



171

rit.



178

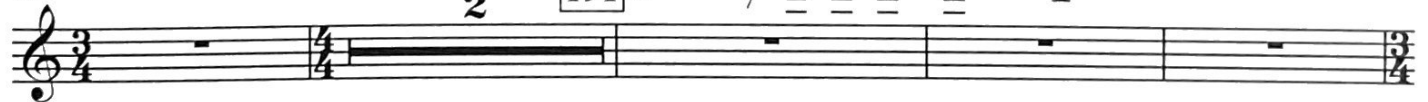
p *mf*

179

rit. $\text{♩} = \text{c. 48} - \text{Dreamlike}$



188 $\text{♩} = \text{c. 48}$



191

E♭ Alto Sax. 1

194



197

*Sing any pitch of your choosing from the notated B♭ Major chord (notated in concert pitch). Men sing in their upper middle register; women sing in their lower register.

3

ah...

gradually to... oo...