

LUX PERPETUA

FOR SYMPHONIC WINDS AND PERCUSSION

Trombone 2

FRANK TICHELI

With Quiet Reverence ♩ = c. 72

6 9 8 17 7

(Euph. & Tuba enter)

24 Tbn. 1 25 7 32

mf *p* *mf*

38 42

p *mf* *p* *p* *mf* *p* *mf*

45 a2 49

p *mf* *p* *p* *mf*

52 rit. molto rit. lunga 58 Solemn (♩ = c. 48) 3

f *mf*

61 66 ♩ = c. 56 3

mf *p* *mf*

70

76 Majestic (♩ = c. 60)

f *mf* *f*

83 rit. A Tempo 2

ff *mf* *p*

Trombone 2

90 $\text{♩} = \text{c. } 120$ accel. **3**

98 **99**

103 **107** $\text{♩} = \text{c. } 168$ ($\text{♩} = \text{c. } 84$) **3** *mf*

112 **117** $\text{♩} = \text{c. } 84$ VII *cresc.* *f*

118 **123** **5** *p* *mf* *p* *mf*

129 **135** *p* *mf* *p* *mf* *p* *f*

137 **143** *p* *mf* *p* *mf* *f*

144 **149** *cresc.*

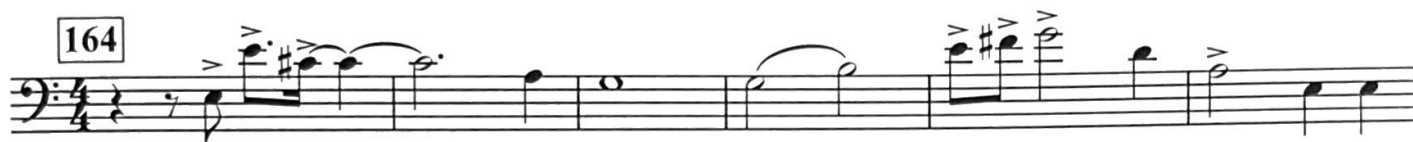
152 **155** **3** *ff* **3**

Trombone 2

158

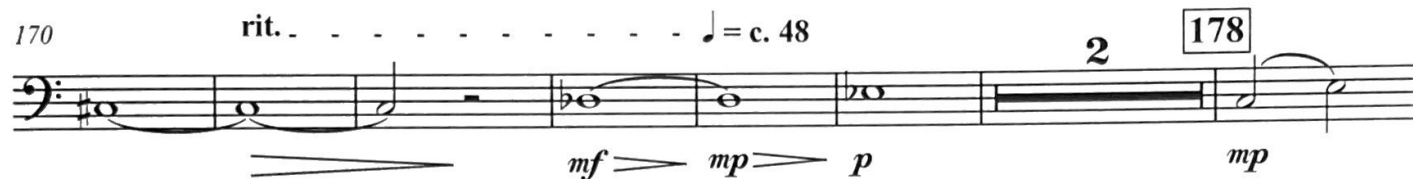


164



170

rit. ♩ = c. 48



178

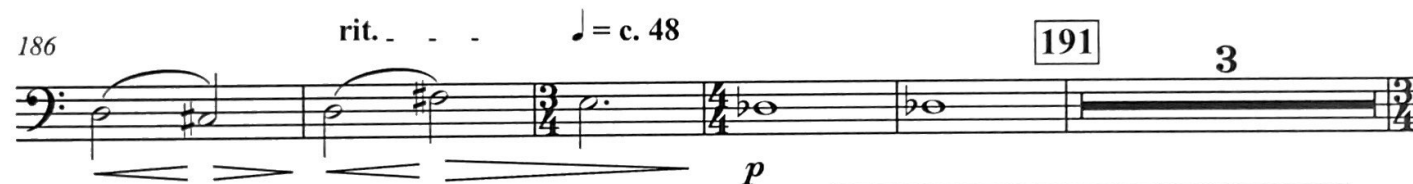
179

rit. ♩ = c. 48 - Dreamlike



186

rit. ♩ = c. 48



191

194



*Sing any pitch of your choosing from the notated Bb Major chord (notated in concert pitch). Men sing in their upper middle register; women sing in their lower register.